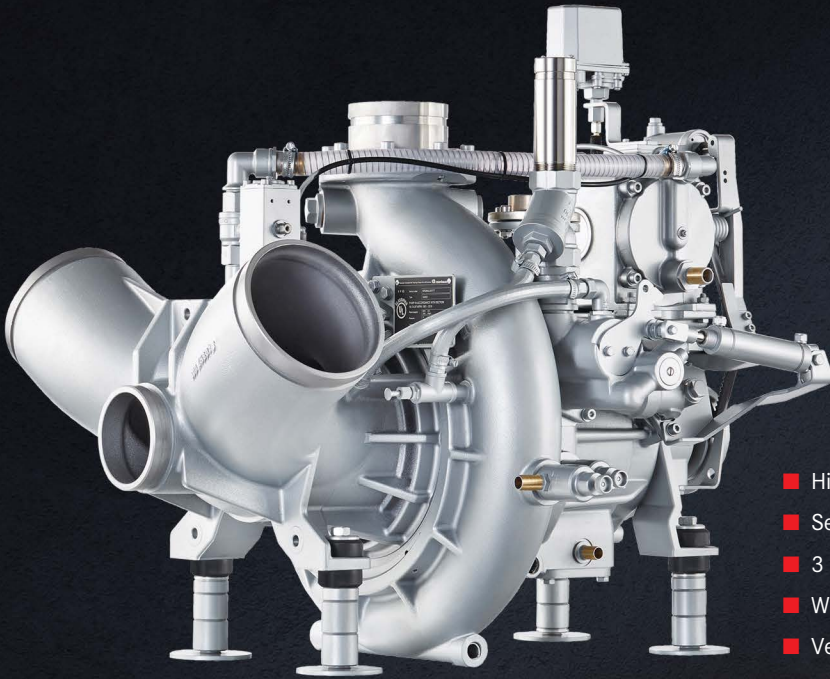


NH SERIES PUMPS



ROSENBAUER COMBINED NORMAL- AND HIGH-PRESSURE FIRE PUMPS. SINGLE STAGE NORMAL PRESSURE PUMP RATED FOR 500, 750, 1000, 1250 AND 1500 GPM.

- Combined With a 100 GPM, 600 PSI Four-Stage High-Pressure Pump
- UL Classified According NFPA 1901
- Normal Pressure and High Pressure on One Common Shaft
- Capable of Volume and High Pressure Flows Simultaneously
- Reduced Water Use when Operating with High-Pressure
- CAFS-like Foam on High Pressure
- High Strength, Lightweight Aluminum Alloy
- Optional Bronze Sea Water Resistant Housing and Impellers
- Optional High Corrosion Resistant Stainless Steel Housing and Impellers

- High-Grade Stainless Steel Shaft
- Self-Adjusting Mechanical Seals
- 3 Dimensional Spiral Shaped Impeller
- Water Strippers in the Housing for Best Efficiency
- Vertically Split Pump Case for Ease of Service
- 5 Year Warranty
- Automatic Primer System
- Optional Around-the-Pump Foam System HP-FIXMIX (1 Ratio)
- Optional Around-the-Pump Foam System FIXMIX (up to 3 Ratios)
- Available for Mid-Ships or Rear-Mount
- Optional Pump and Roll Operations on Normal or High Pressure

Drive options

- ▶ PTO Direct Driven – No Gear Box
- ▶ PTO Gear Box with Multiple Drive Ratios
- ▶ Split-Shaft Gear Box