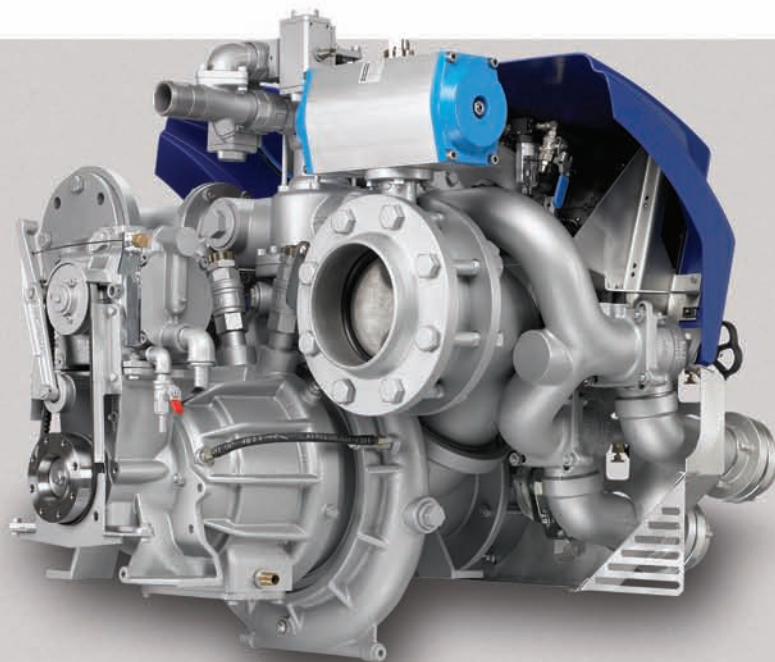


FIRE PUMPS

ROSENBAUER 500, 750, 1000 AND 1250 GPM
MULTI-STAGE FIRE PUMPS



- Up to 1250 GPM
- Capable of high flow and high pressure simultaneously
- Maintenance-free, rotating mechanical seals
- Lightweight, high strength alloy construction
- Helical cut gears for maximum transfer of power
- Vertically split pump case for ease of service
- Quiet, efficient operation
- Most effective pump-and-roll performance
- PTO and split shaft driven



NH Series Fire Pump Specifications

Pump Ratings: NH 500 GPM at 150 PSI, NH 750 GPM at 150 PSI, NH 1000 GPM at 150 PSI, NH 1250 GPM at 150 PSI. Meets full NFPA rating. All models also produce 100 GPM at 600 PSI simultaneously from the high pressure stage.

Design: Multi-Stage High Pressure/Volume Fire Pump.

Pump Construction: High-grade alloy pump body and accurately balanced impellers mounted on a stainless steel shaft.

Gear Case: Constructed from high-strength alloy with a pump shaft supported by three roller ball bearings—two located in the gear case and one in the suction inlet. Bearings are protected by maintenance-free, self-adjusting mechanical seals.

Gears: Gears are high strength, low noise and helical cut for maximum transfer of power to pump. Multiple final drive gear ratios are available for maximum performance.

Impellers: High-grade, light alloy impellers and diffusers.

Priming System: Powered by a Rosenbauer positive displacement double-acting piston pump with oil bath lubricated moving parts. Primer pump is belt-driven from the pump gear case and automatically actuated when the pump is engaged. The priming pump disengages as prime is achieved and positive pressure is attained. Oils and lubricants are not expelled into the atmosphere in the priming process. A primer oil reservoir is not required.



SOUTH DAKOTA DIVISION
100 THIRD STREET
LYONS, SOUTH DAKOTA 57041
P: 605.543.5591

MINNESOTA DIVISION
5181 260TH STREET
WYOMING, MINNESOTA 55092
P: 651.462.1000

AERIALS DIVISION
870 SOUTH BROAD STREET
FREMONT, NEBRASKA 68025
P: 402.721.7622

SALES DIVISION
P: 605.543.5551
E: info@rosenbaueramerica.com