

CENTRAL

FORMED ALUMINUM BODY



 **rosenbauer**
Firefighting Technology

Built To Your Highest Specifications.

The Best Equipment Adapts To Your Needs.

Rosenbauer Central body styles feature a wide range of compartment configurations and strong, durable bodies so you can build the truck you want. Tough enough to get the job done, Rosenbauer Central bodies live up our highest, most important standards. Yours.





Lifetime Warranty

Central body styles offer a galvanized subframe with a lifetime warranty, so your frame isn't just strong. It's lifelong.

Heavy-Duty Steel Subframe

Heavy-duty steel tube, channel, angles and gussets are welded together and hot-dip galvanized to form an extremely strong subframe, which is the backbone of this modular, economical body.



1
Front and Back Door Post Extrusion



2
Top and Intermediate Door Frame Extrusion



3
Angled Aluminum Body Support Extrusion



4
Main Framing Extrusion



5
.125" Interior Diamond Plate
(.190" Optional)



6
.125" Diamond Plate Top Cap
(.190" Optional)



7
Flat Gusset Plate
(.375" Steel)



8
Angled Body Outrigger
(2" x 3")



9
Steel Tubing
(1.75" x 3")



10
Subframe Channel (1.75" x 3")



Space for your largest equipment.

Rush-mounted hinged doors with stainless steel hardware allow full-width storage. Compartments can also be customized to fit your needs with shelves, roll-out trays and equipment mounts.



Doors designed for safety and convenience.

Roll-up doors give you easy access to adjustable shelves, roll-out trays and tool boards without extending into the roadway for added safety.



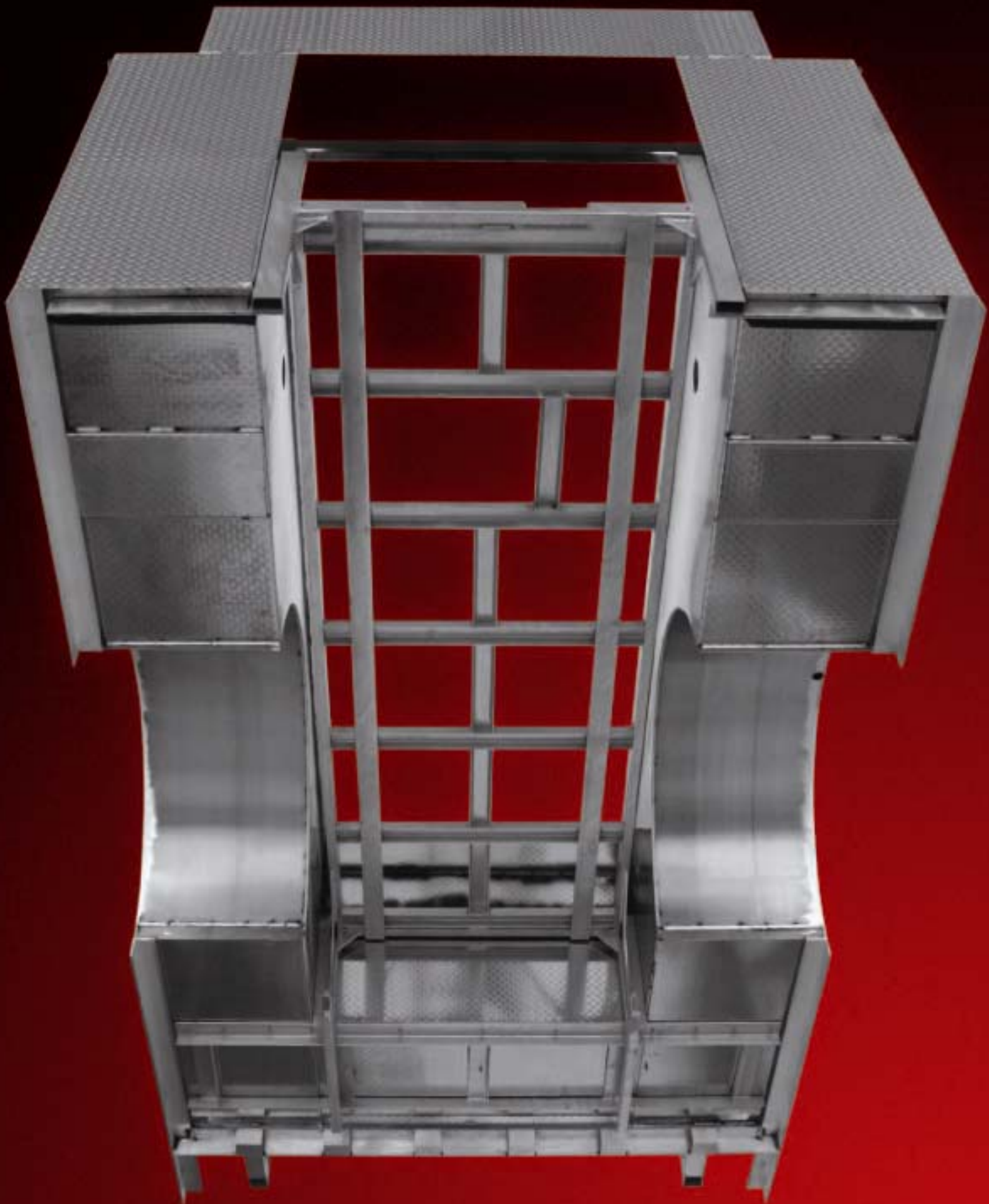
Wiring you can rely on.

Heavy gauge function and color-coded wiring along with resetting circuit breakers and junction strips form the basis for a reliable wiring system.



Detailed, precise paint application.

Rosenbauer's state-of-the-art paint process is environmentally controlled for precise application. Paint is mixed to create or match any shade and then applied and baked for a durable, consistent, high-gloss finish.





PTO & Split Shaft

Pumps up to 3000 GPM



Manual & Automatic Direct Injection Foam Systems

Class A & B foams



Poly Tanks With Lifetime Warranty

Fiberglass & steel optional



Gas, Diesel & Hydraulic Generators

Up to 30,000 watts



rosenbauer
Firefighting Technology

READY TO SERVE™

www.rosenbaueramerica.com

Central Division 100 Third St., Lyons, SD 57041 605.543.5591 • General Division 5181 260th St., Wyoming, MN 55092 651.462.1000

Aerials Division 870 South Broad St., Fremont, NE 68025 402.721.7622